

SLC-012T

Description

Trimless anodized aluminum channel that comes complete with two aluminum endcaps and an opal polycarbonate lens.

Extra clips and endcaps available by request.

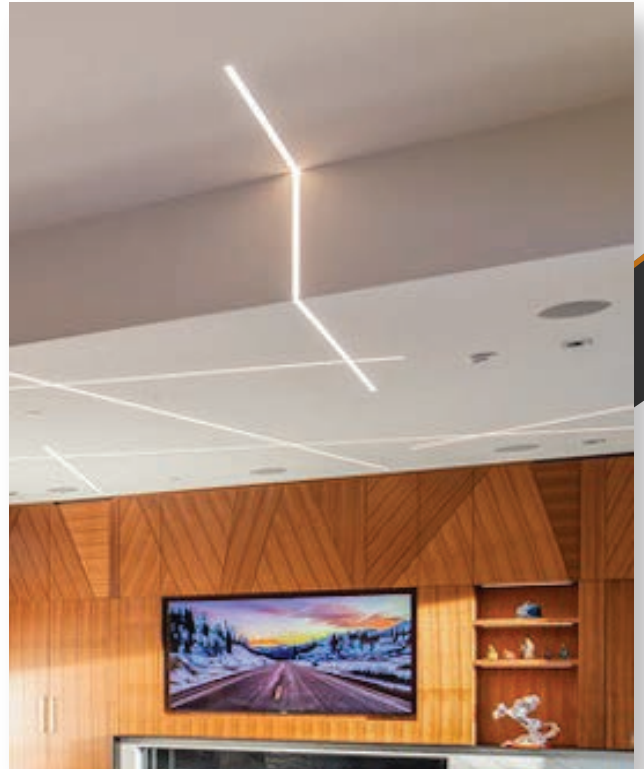
Specifications

- Channel : Anodized aluminum extrusion
- Lens : Opal polycarbonate, high heat resistant, UV stable, shatter resistant
- Length : 8' (2.44 meters)

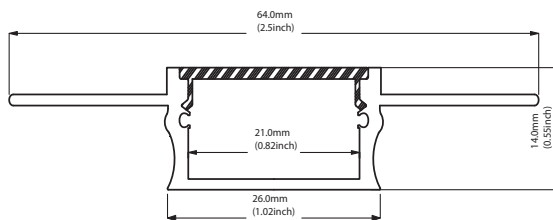
Custom color available.

Applications

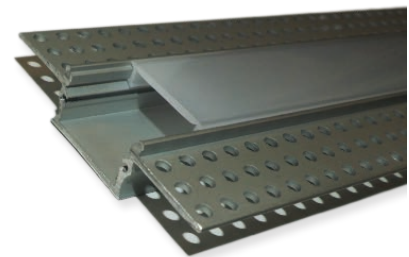
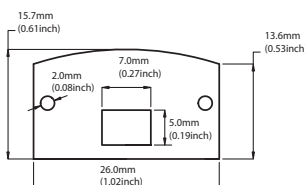
- Drywall
- Flanges can be cut off and installed in wood



Channel



End Caps



ORDERING CODE	COLOR
SLC-012T	----
SLC-012T	Blank (Silver)
	WH
	BK

Custom RAL color upon request.